

Domus Demain
Study for a habitat for the start
of the 21st century

The importance which has recently been accorded to the «I» in architecture, the creative self, has tended to overshadow the fact that an architect is also a social agent. The problem of housing exists in different yet similarly acute forms all over the world.

In first addressing this matter a number of years ago, together with François Leclercq, we came to the conclusion that we could not dissociate the question of housing from the question of the city: they are two facets of the same question, we read wherever we looked.

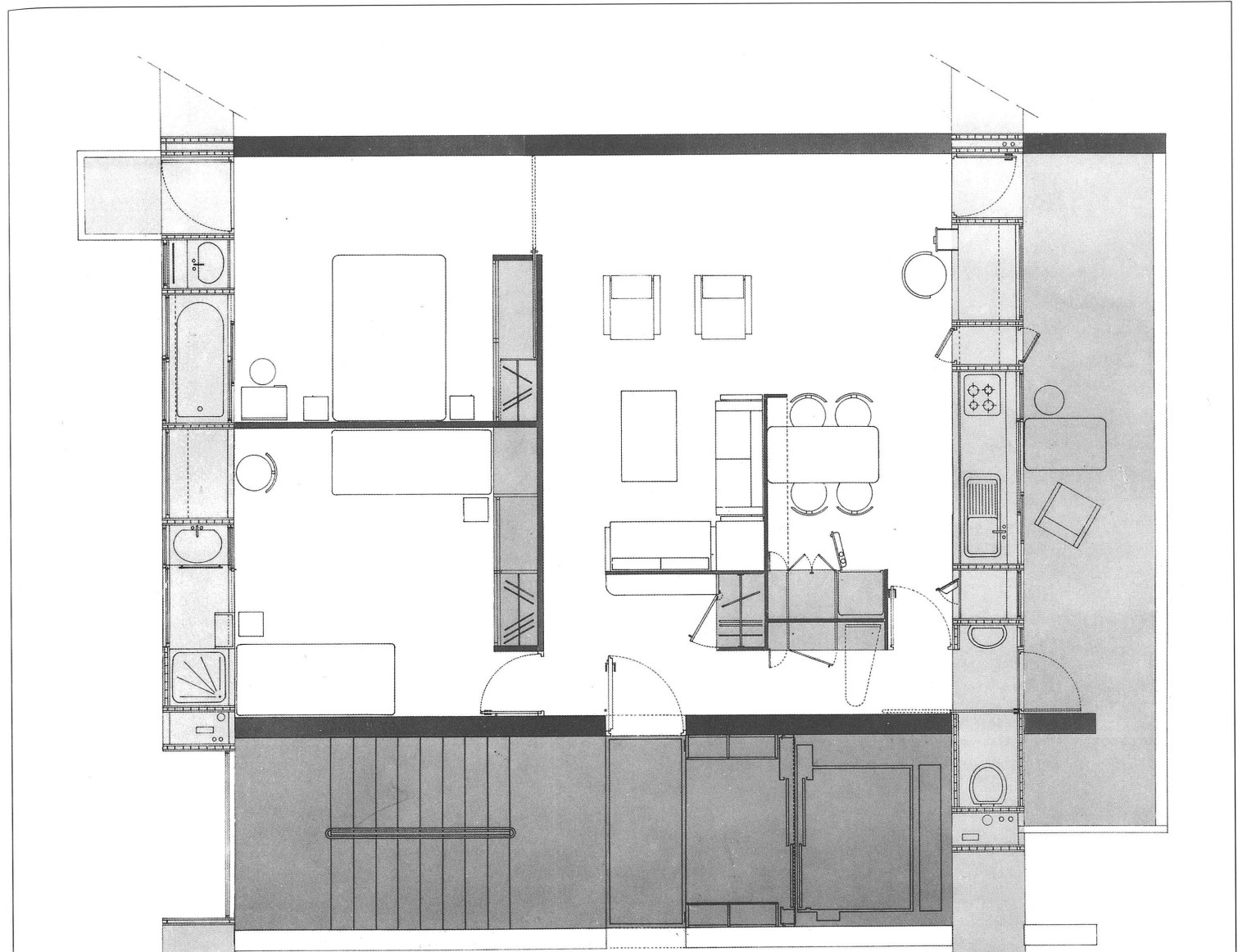
Throughout the present century, however, it has been the housing «type» which has kept things on the move. Ways of living, lifestyles, still have much to contribute to the evolution of the city.

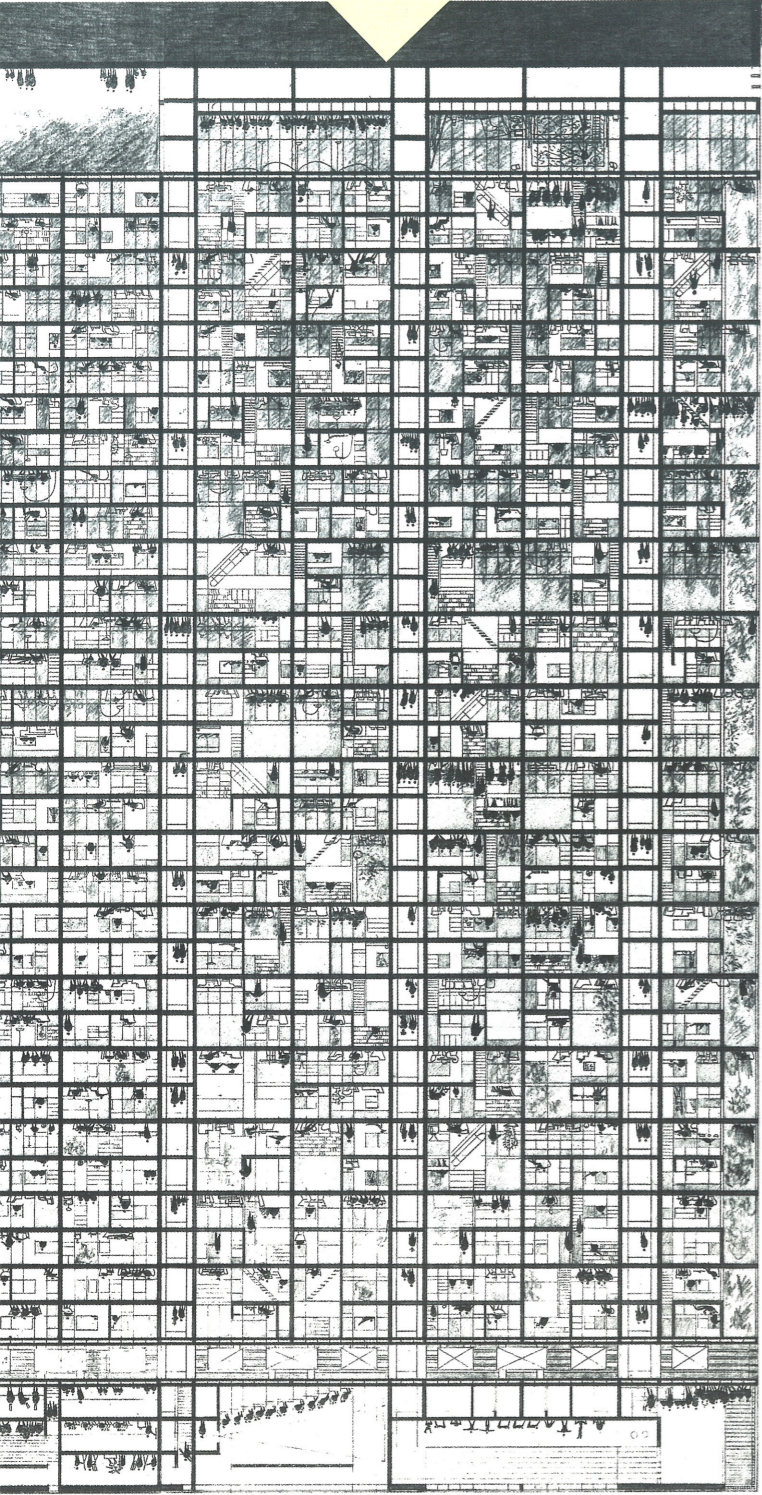
So we had to get down to fundamentals and admit that space will never be the only raw material of architecture. To work at the same time with duration is to give a very evident place to the question of the permanent and the ephemeral.

The housing presented here has a certain passive quality at its core, while all of the energy, all of the capacity to evolve, to embody technological progress, is to be found in the facade. In this way the notion of the facade, of modelling, of good design, the dread of semantic emptiness were all fused together.

Planta tipo de un módulo de vivienda

Typical floor plan of a housing module





Secciones interiores en perspectiva y general de todo el bloque
Interior perspective section and general perspective of the entire block

