

Tiantai No.2 Primary School / LYCS Architecture

Architects: **LYCS Architecture**

Location: **Tiantai, Taizhou, Zhejiang, China**

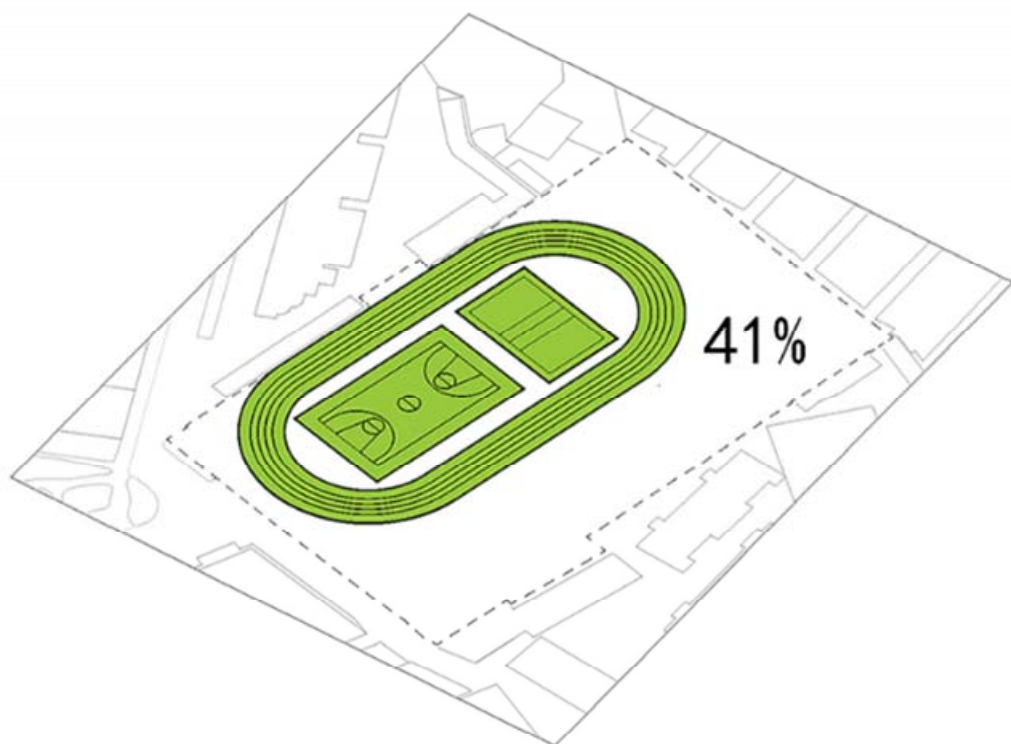
Area: **10190.0 sqm**

Year: **2014**

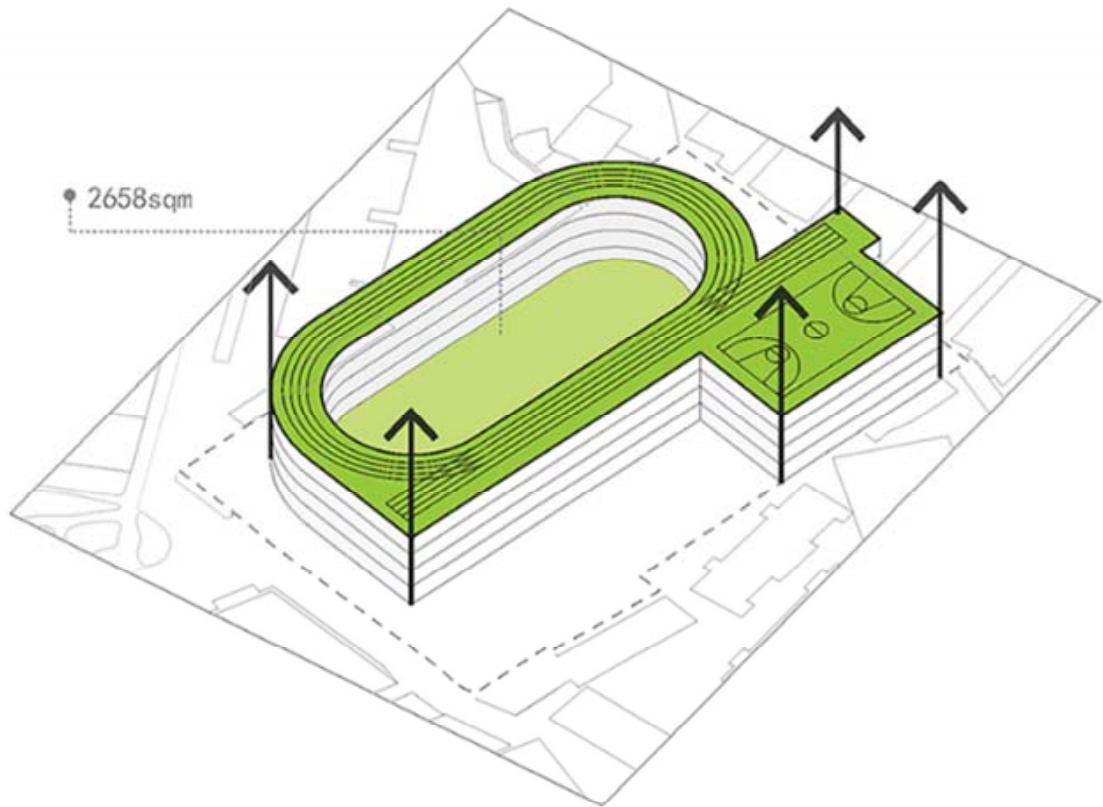
Photographs: **Yu Xu, Shengliang Su**



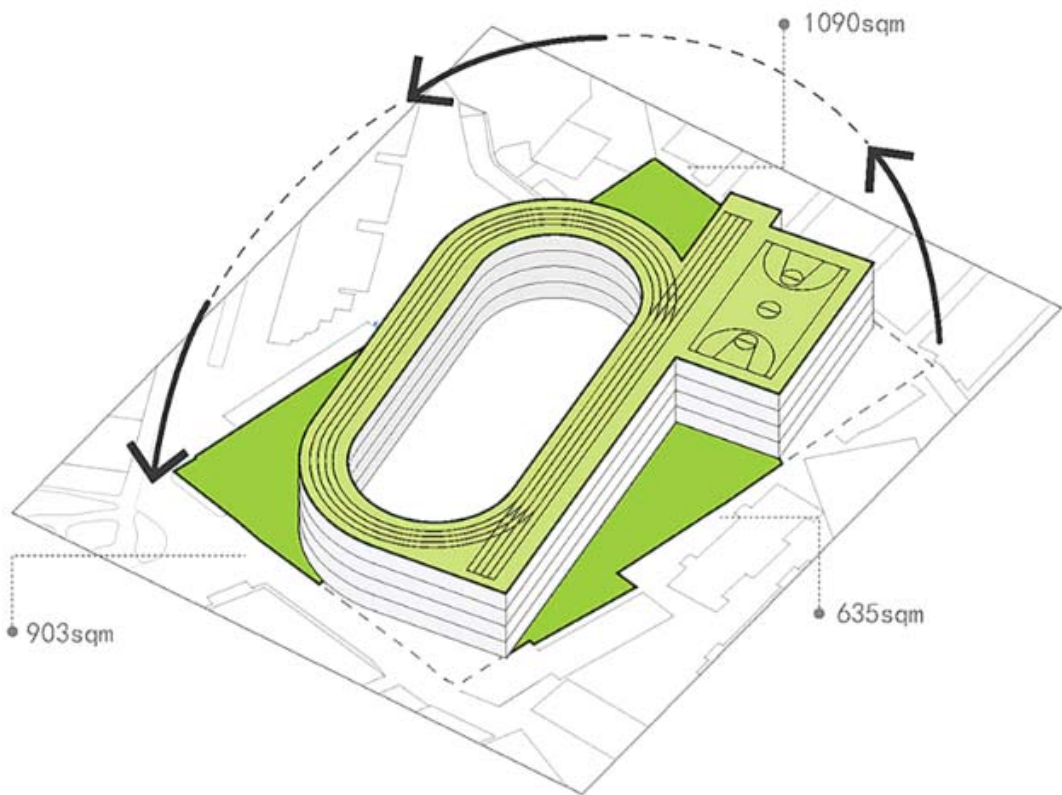




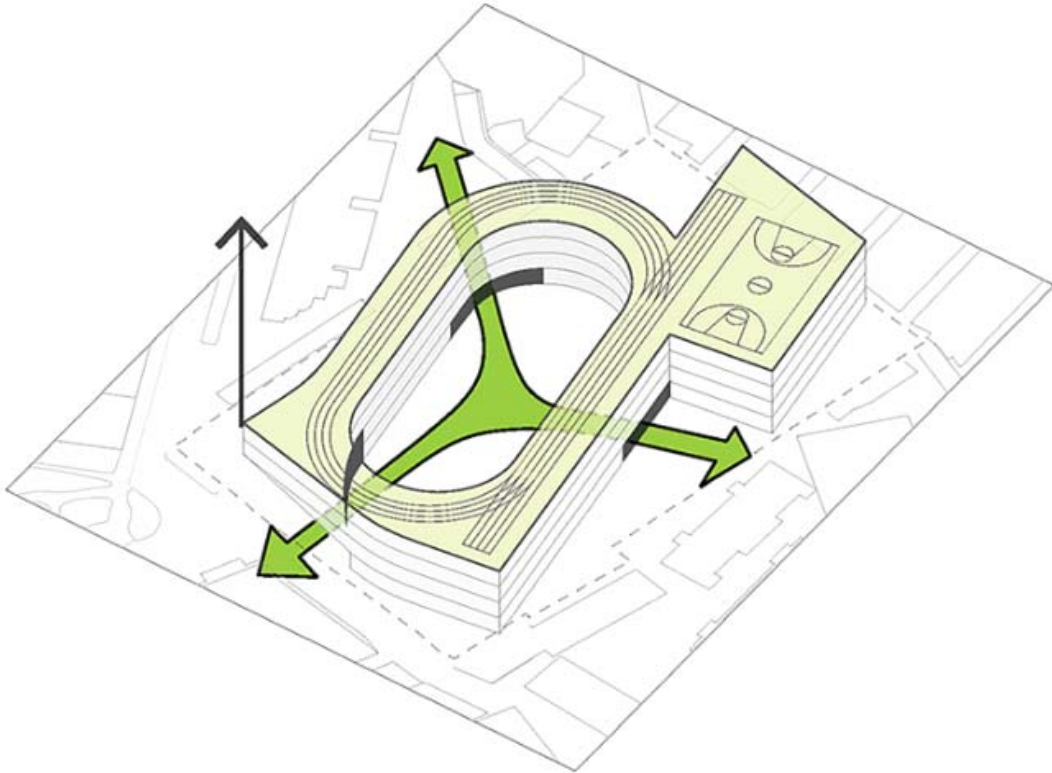
02 AREAS OF SPORTS FACILITIES



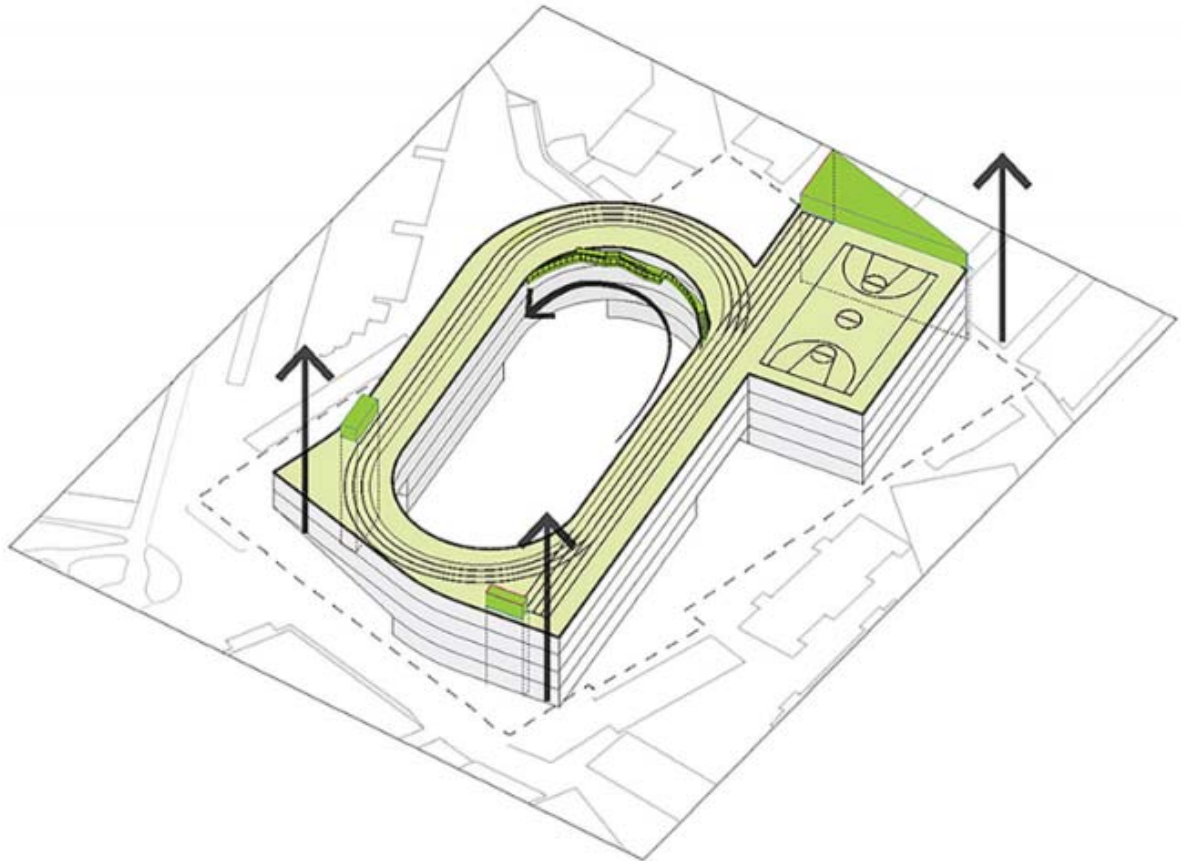
03 EXTRUSION OF MASSING



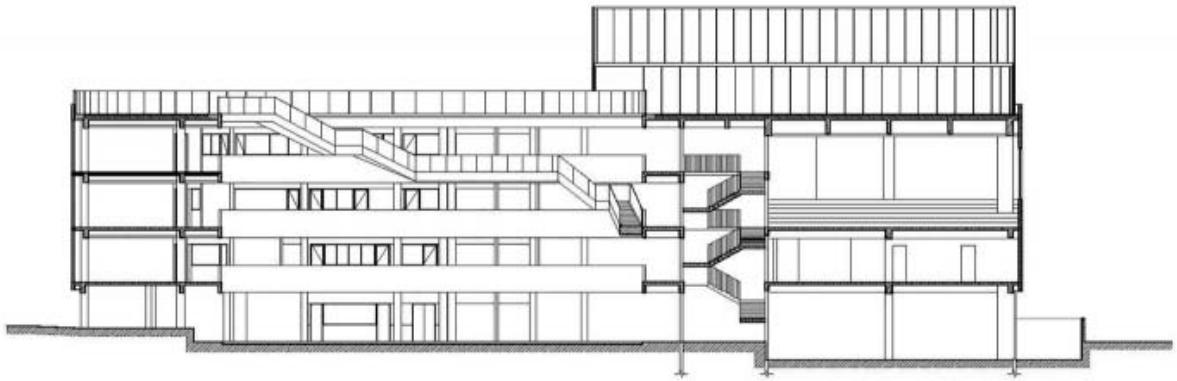
04 ROTATION OF MASSING



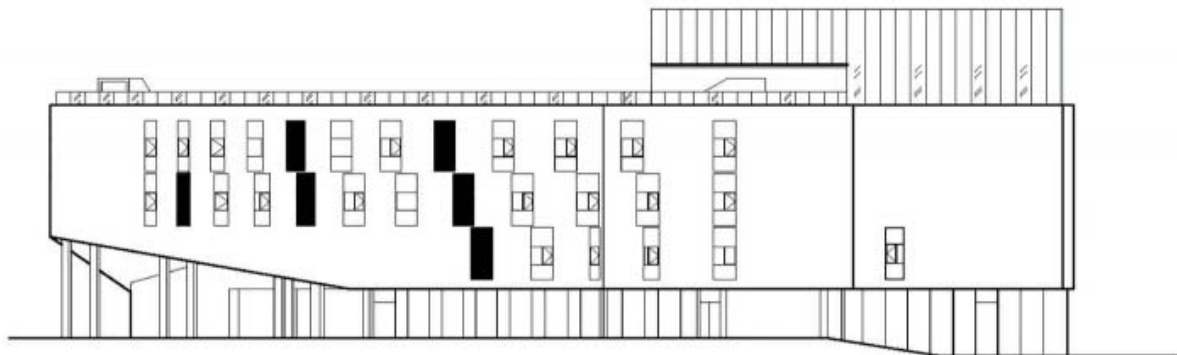
05 GROUND SPACE CONTINUITY



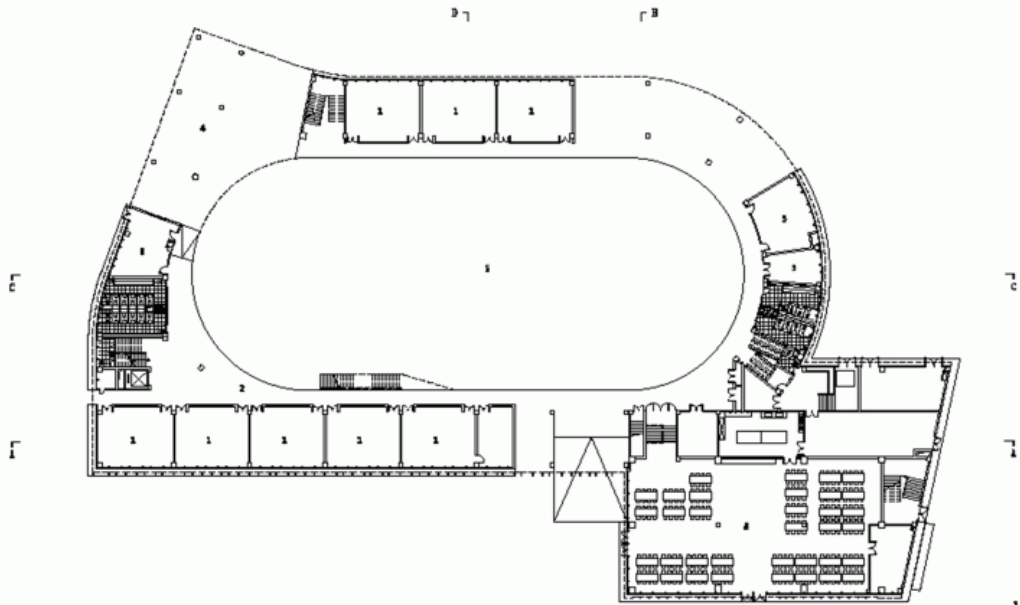
6 VERTICAL CIRCULATIONS



B-B剖面图 | Section B-B

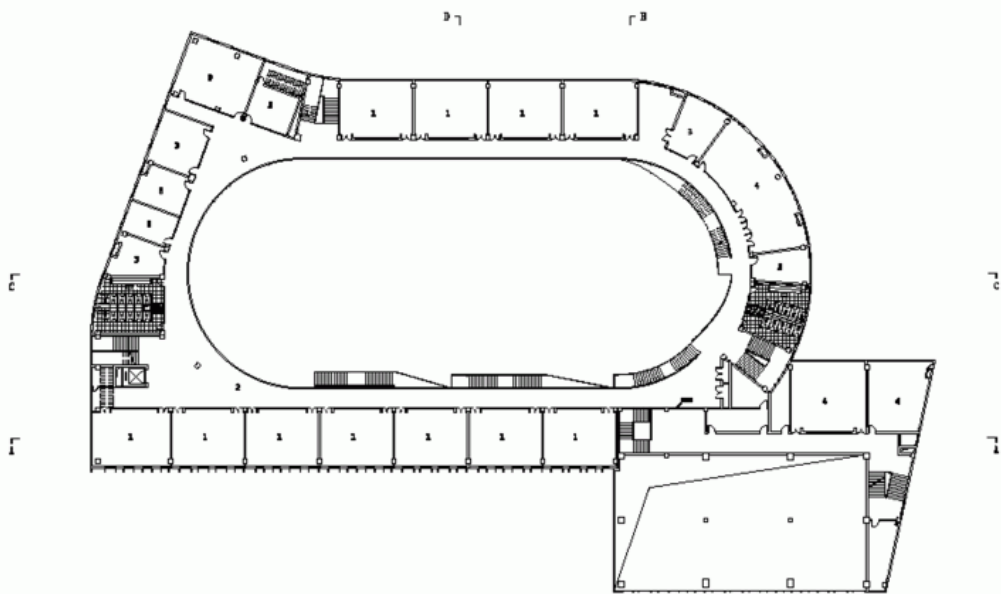


主入口立面图 | Main Entrance Elevation



Ground Floor Plan

- 1. Classroom
- 2. Corridor
- 3. Office
- 4. Entrance
- 5. Playground
- 6. Canteen



Forth Floor Plan

- 1. Classroom
- 2. Corridor
- 3. Office
- 4. Laboratory

