



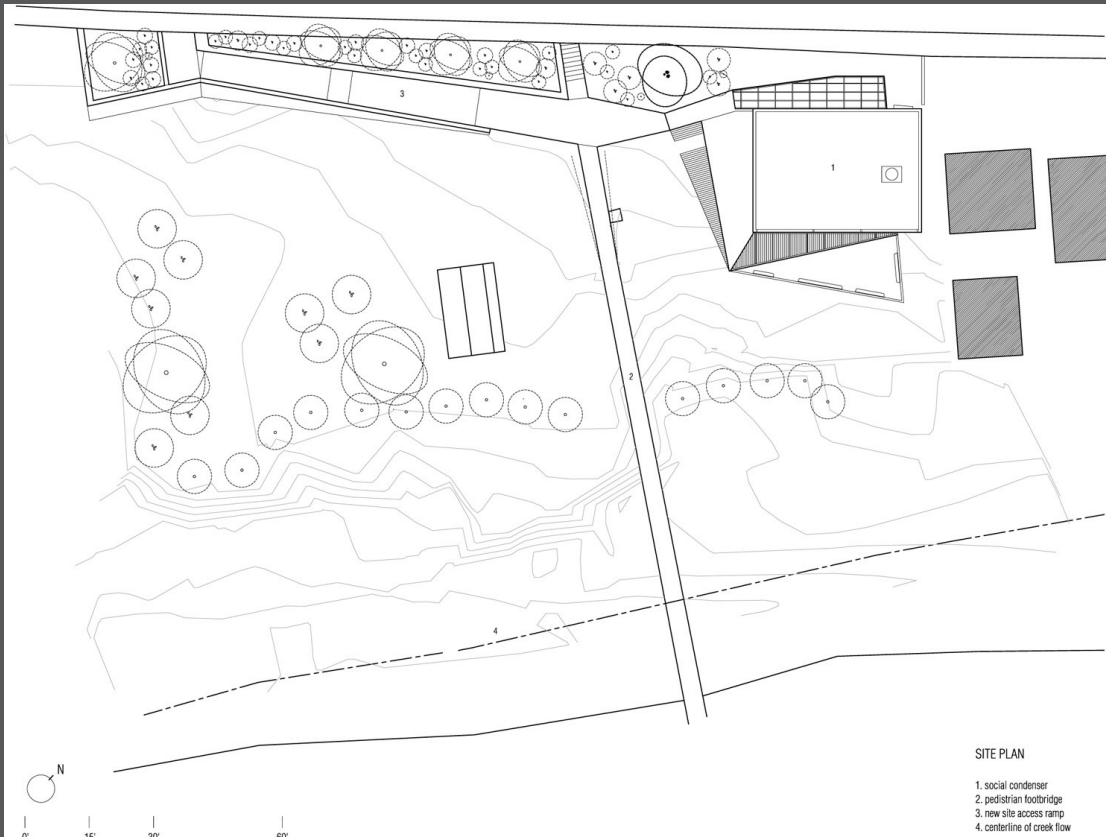
social condenser superior

Architektur
Blank Studio

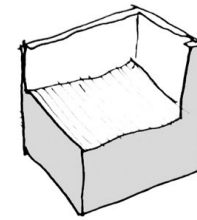
Adresse
Superior, Arizona, US

Baujahr
2007

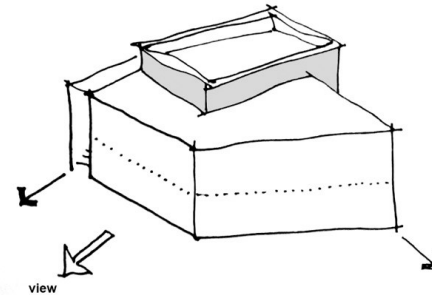
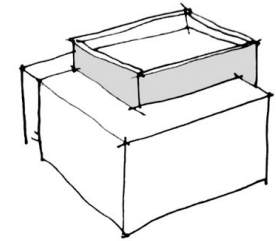




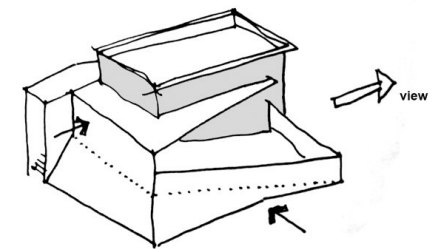
EXISTING - EXPOSE SHELL AND CONDITION FOR USE



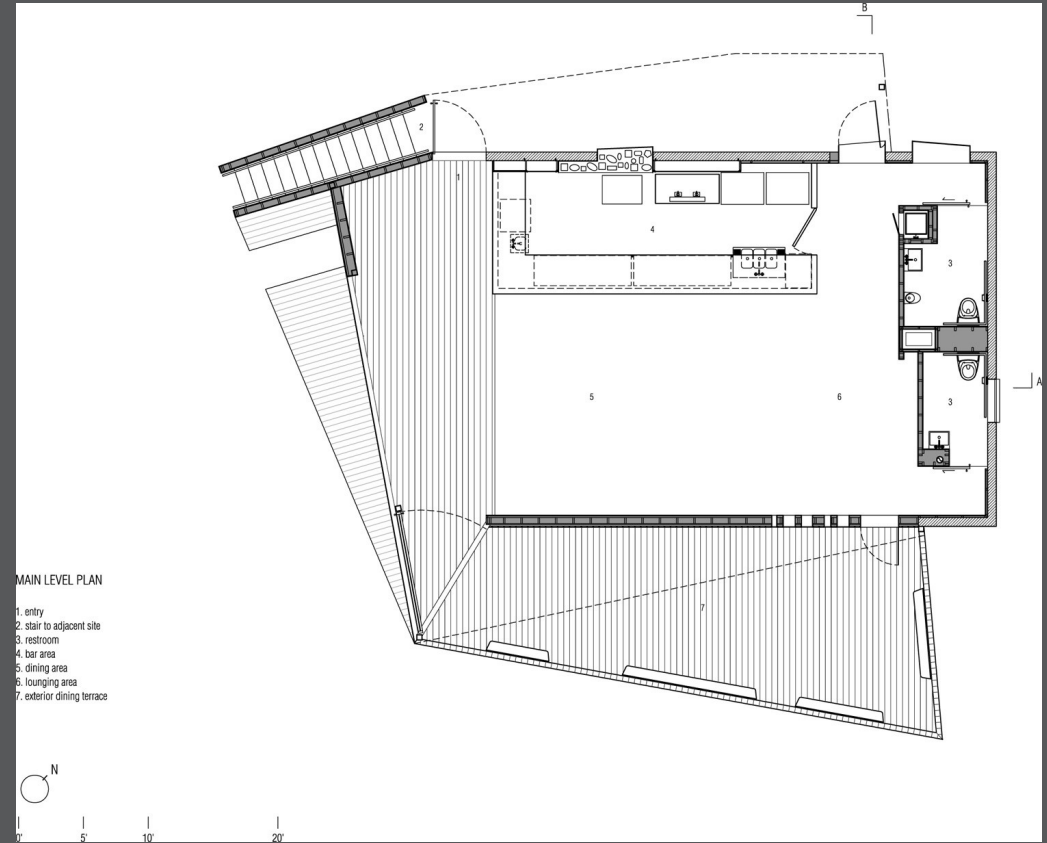
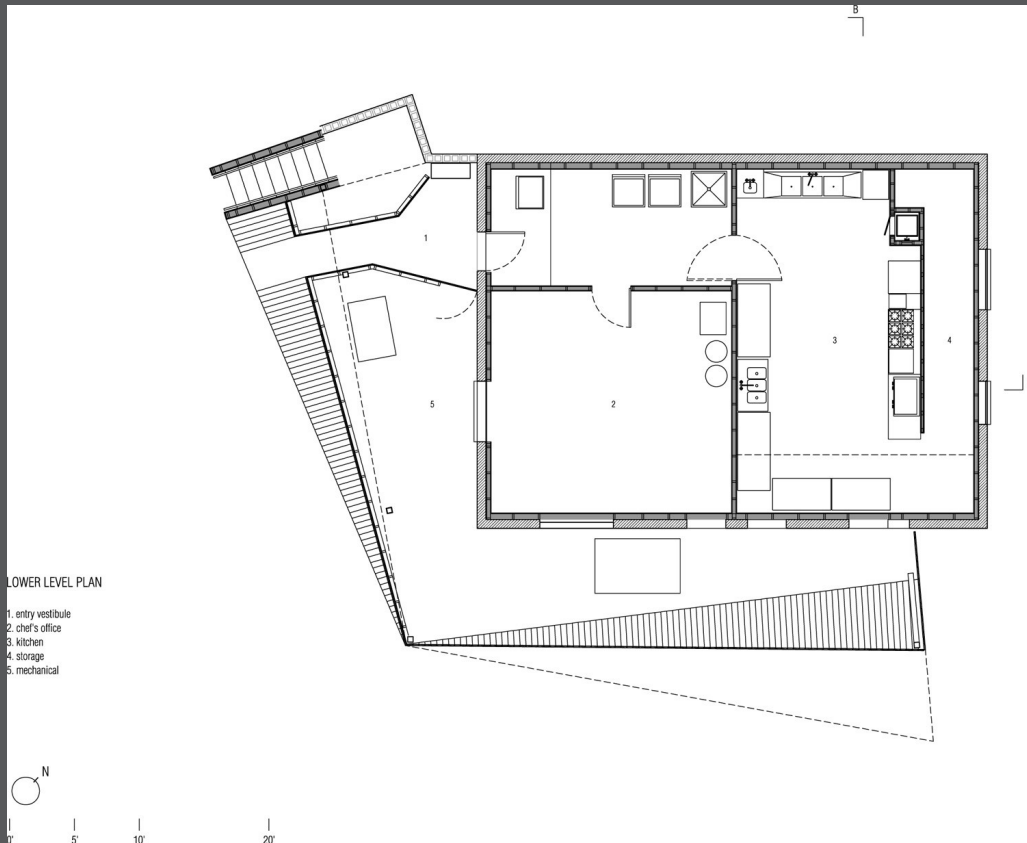
ADDITION - ADD LINK FROM STREET TO PARK (STAIR);
EXPAND INTERNAL SPACE

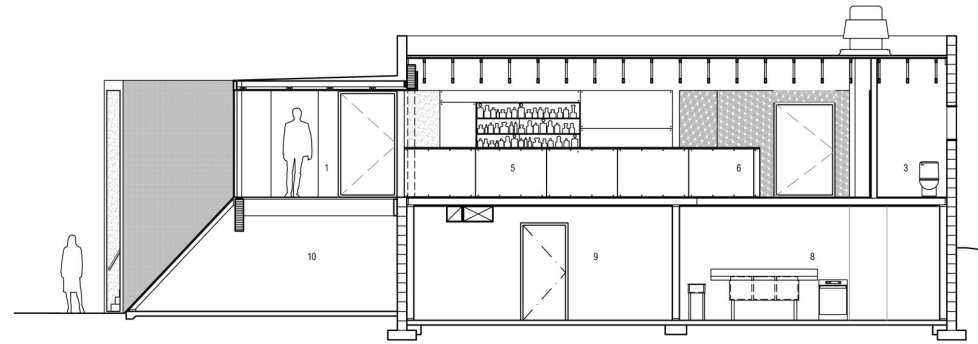


PROJECTION - PULL CORNERS TO ALIGN SPACES WITH PRIME VIEWS;
EXPAND BACK HALF OF ADDITION FOR EXTERNAL DECK



INFLECTION - PUSH GLASS FACE INWARD TO SHELTER WITH STAIR;
PUSH REAR CANOPY INWARD TO OPEN VIEW CORRIDOR

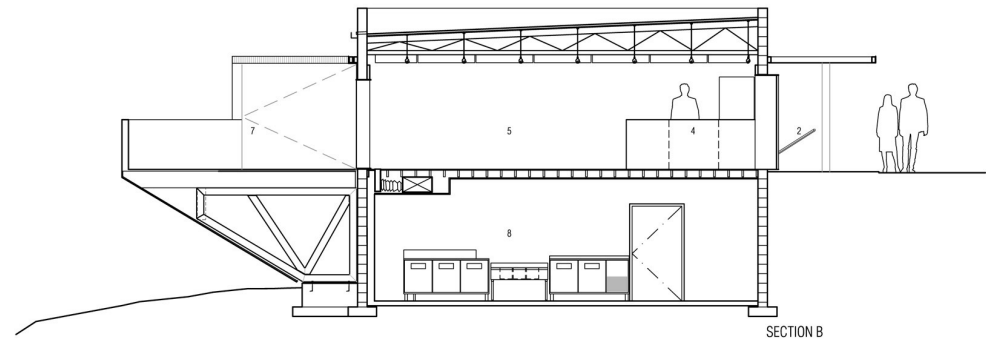




SECTION A

SECTION LEGEND

- 1. entry
- 2. stair to adjacent site
- 3. restroom
- 4. bar area
- 5. dining area
- 6. lounging area
- 7. exterior dining terrace
- 8. kitchen
- 9. chef's office
- 10. mechanical



SECTION B



social condenser superior



social condenser superior





Begegnungszentrum Brühl

Architektur

bathe + reber

Adresse

Heinrich-Fetten-Platz 3
50321 Brühl

Baujahr

2010



Begegnungszentrum Brühl





Begegnungszentrum Brühl