



BHUTAN HAPPINESS CENTRE /  $1+1>2$



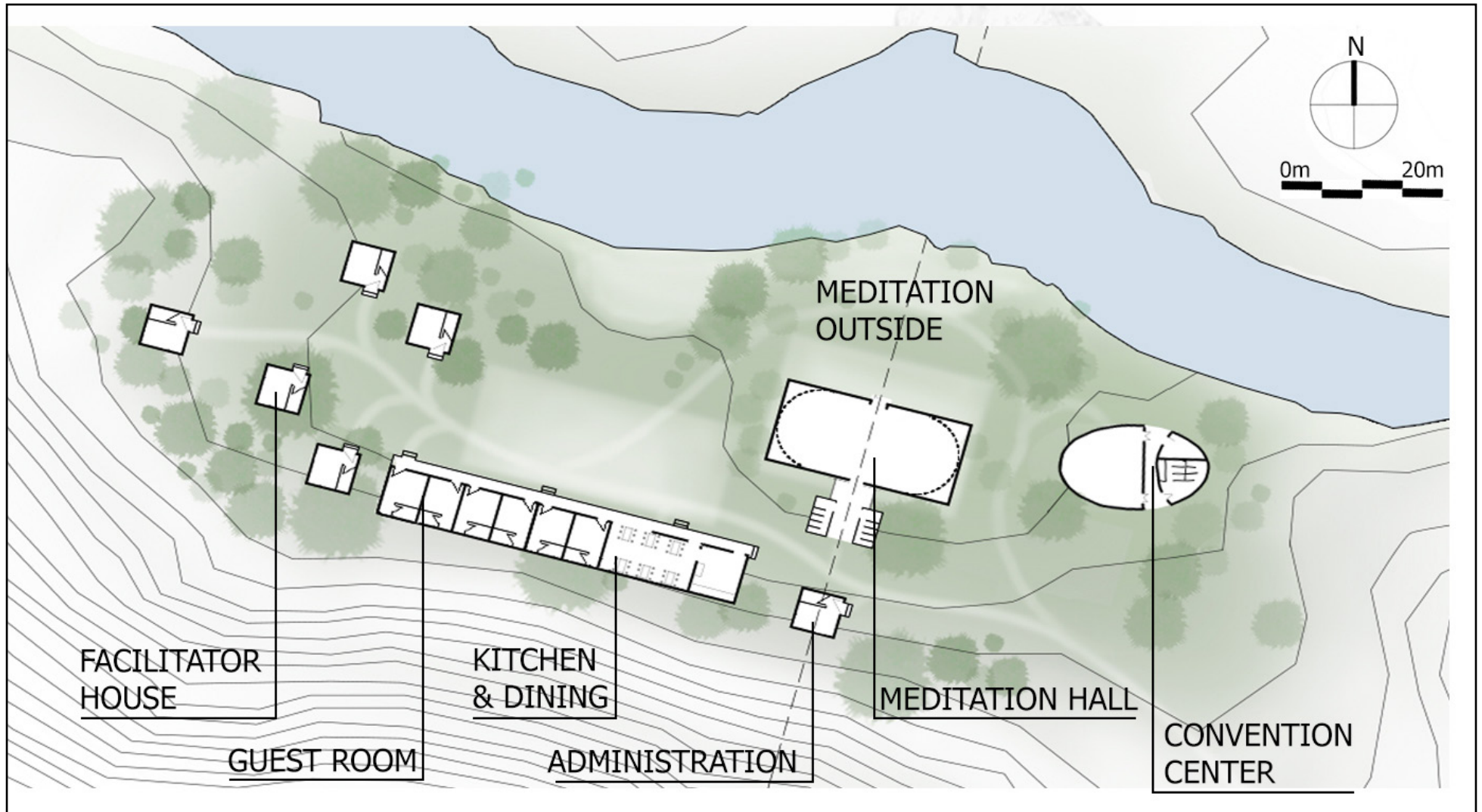
|              |                  |
|--------------|------------------|
| Architects   | 1+1>2            |
| Location     | Bumthang, Bhutan |
| Area         | 1413.0 sqm       |
| Project Year | 2015             |
| Site area    | 9234 m2          |



From the architect. In 2008, Bhutan has been the first country in the world applying the GNH rate (Gross National Happiness) instead of GDP. To celebrate this, The Bhutan Royal and Government have decided to build a center for happiness, where everyone can visit and share their experiences and philosophy about happiness living through meditation, and learn how to be happy and independent from materials.



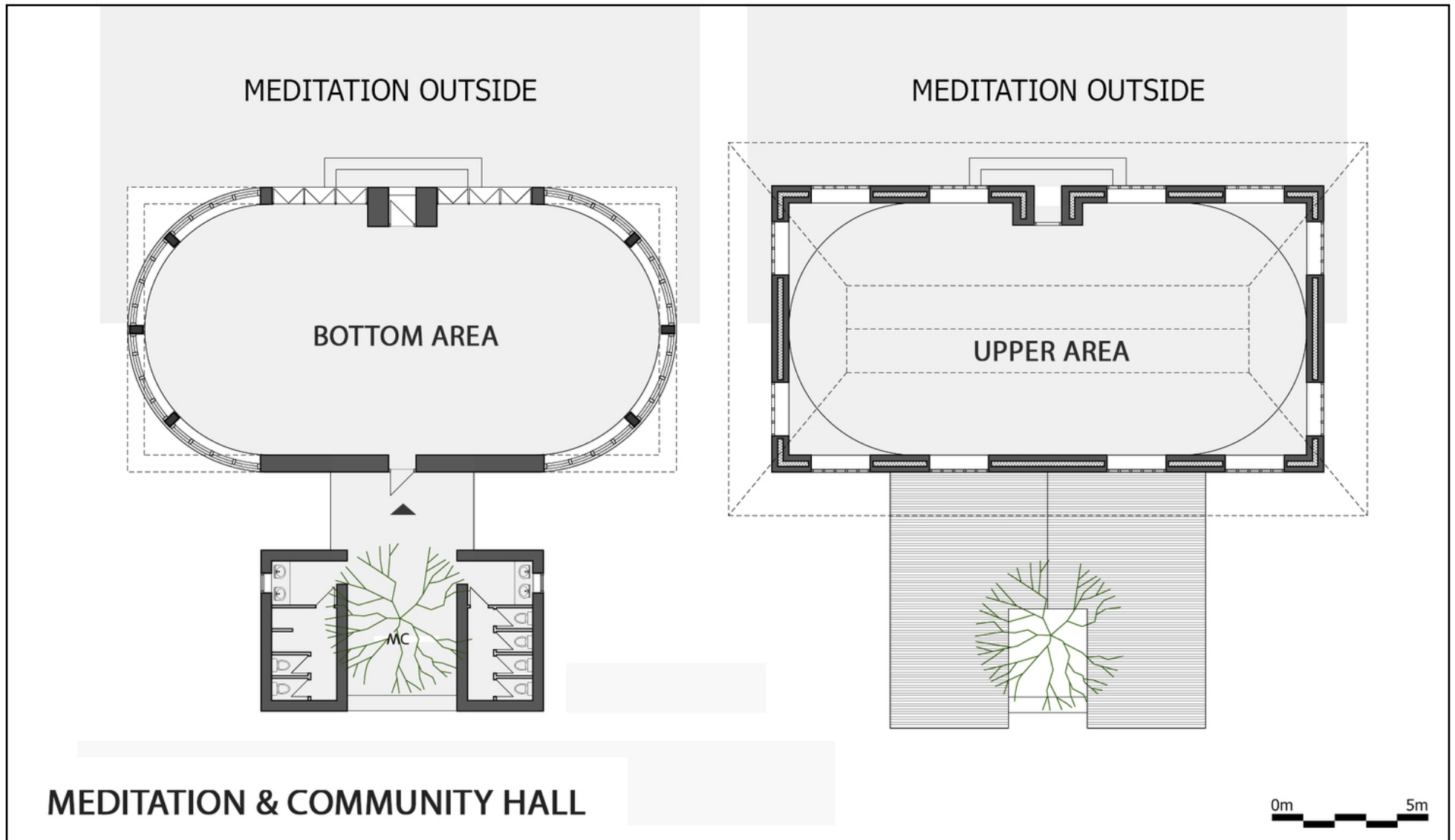
Two in the four main GNH rates are environment protection and preserving culture and identity. Therefore the Bhutan Government has required the GNH center to be environmental friendly and representing local contemporary and traditional cultural identity through design.



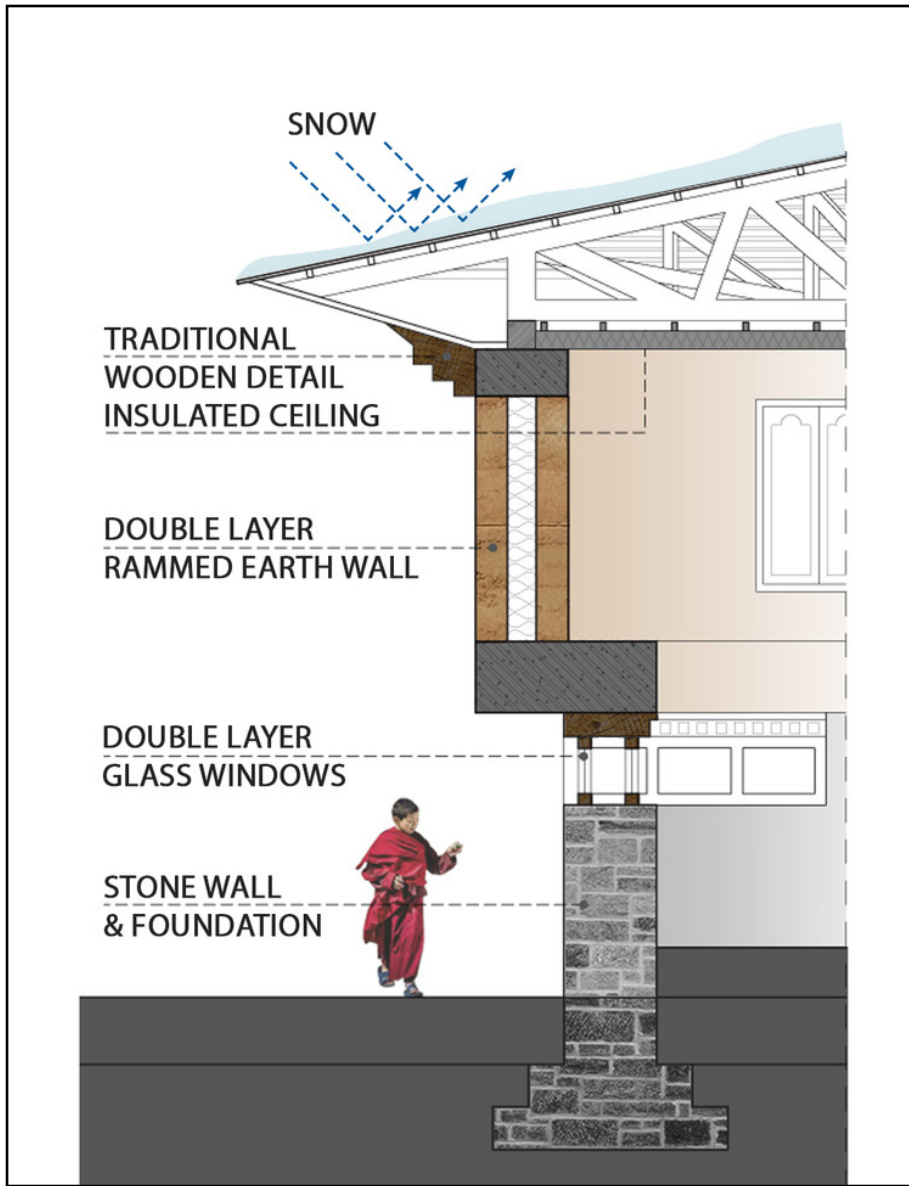
The project includes a 100 seat convention house, a meditation hall for 250 people, administration, kitchen and dining room, and 5 accommodation houses. The cluster locates on the high mountain close to the river of Bumthang, northeast Bhutan.



The main meditation hall is inspired from the harmonies and Asian symbols of the earth and heaven with the first storey in round shape and the second in square shape. The idea is to create a balance life for human in which people do not dominate but live peacefully with nature and support each other to create a sustainable universe.



The design principles are the harmonies among different natural materials: soil – stone – wood; between indoor and outdoor spaces; between technology and traditional vernacular experiences. The half meter wall made of stone and soil ensure keeping the heat in cold winter. The concrete and wooden beam structure; solar energy and water through a natural filter system have helped save energy and increase the connection between human and nature. Existing pine trees were used to build the administration and accommodation centers. With the ecologically sensitive approach, the buildings are part of the natural system.



The convention house with the eclipse shape is inspired from the Buddha tree together with the use of typical vernacular decoration details in a contemporary context.



The entire site slightly locates within the beautiful pine forest, becoming an integral part of it. The opening ceremony took place in October 2015 with the attendance of the Princess and Royal of Bhutan. The Bhutan Center of Happiness is now well operated and welcome by the people of Bhutan as well as international tourists.





Kpäcläjui Indigenous Training Center / Entre Nos Atelier

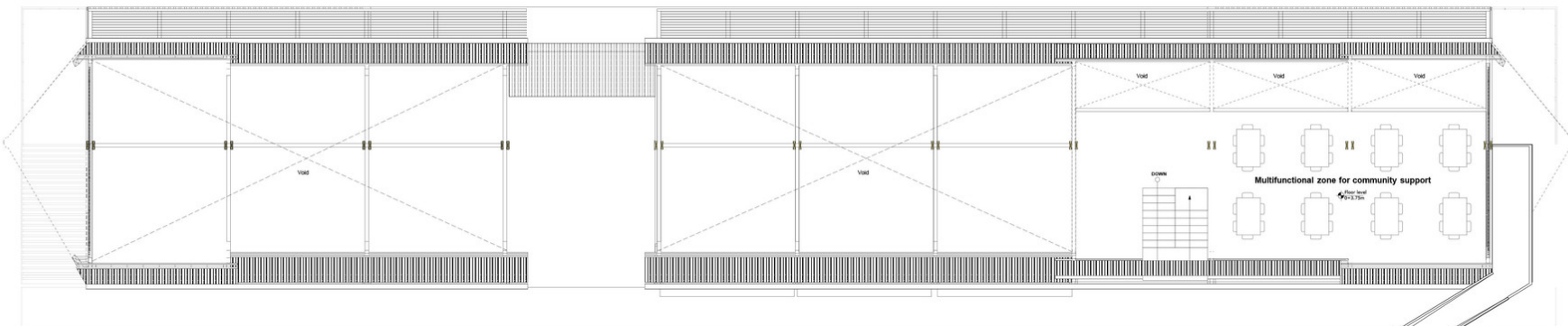


|              |                          |
|--------------|--------------------------|
| Architects   | Entre Nos Atelier        |
| Location     | Grano de Oro, Costa Rica |
| Project Area | 470.0 m2                 |
| Project Year | 2014                     |
| Costs        | 400.000 Dollar           |

Käpäcläjui Training Center is located on the Indian reservation of Tayutic, Turrialba, in the province of Cartago, Costa Rica. It includes a training center and hostel that facilitates interaction between locals and visitors, and develops sustainable community projects in harmony with the environment.



First Level



Second Level

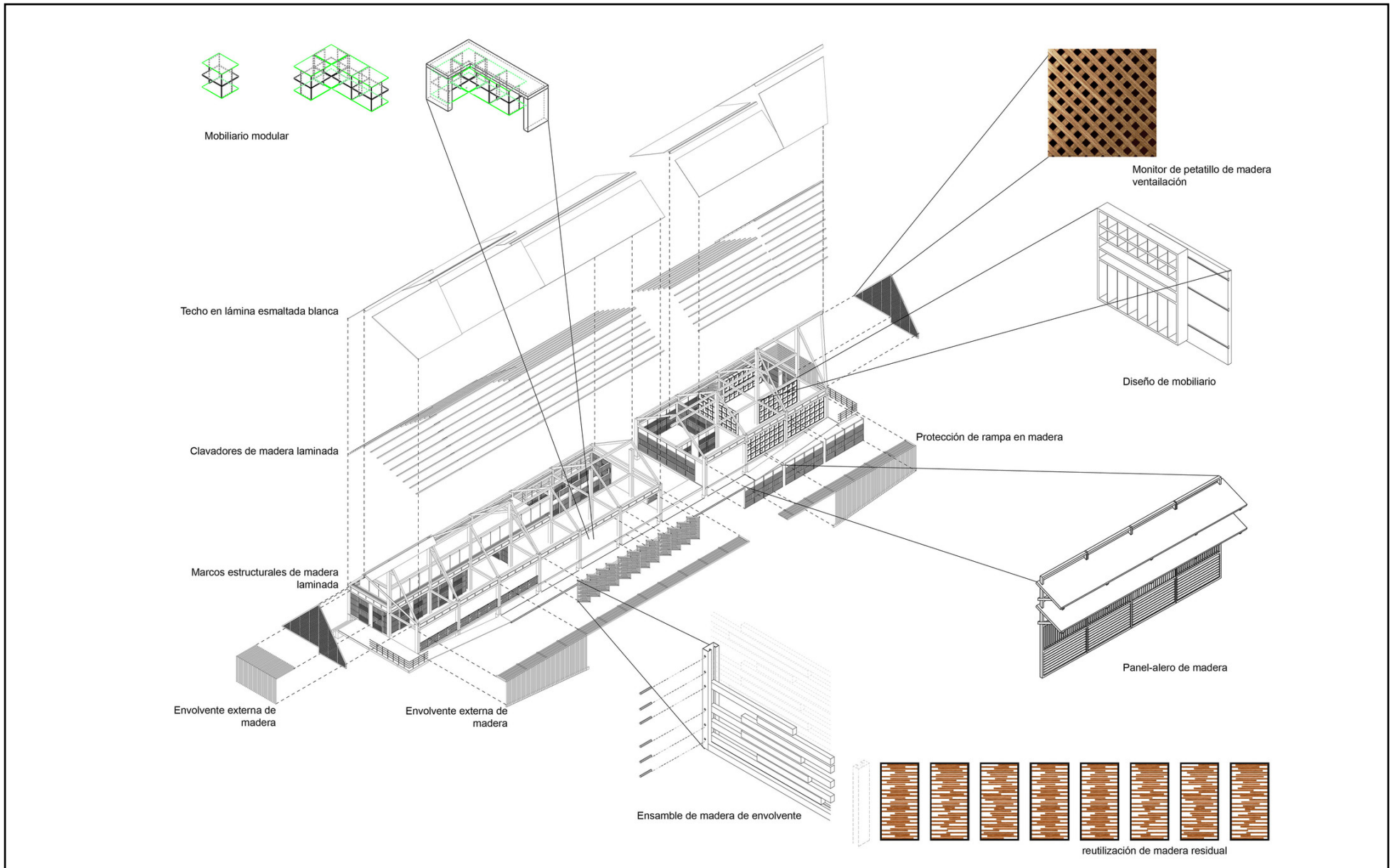
The Hostel project consists of 470 m<sup>2</sup> distributed within a 'large linear layout' along its longitudinal axis. It comprises on the first level administrative areas (offices), multipurpose rooms, dining, kitchen, restrooms, computer room, library and warehouses. In the double height of the front part it incorporates a 'mezzanine' as a area that provides temporary shelter.



The rapprochement between the parties arises from the community management of the Indigenous Development Association Cabecar Chirripó, the Joint Institute for Social Aid (IMAS) and Holcim Foundation of Costa Rica, who subsequently incorporated Entre Nos Atelier into the design process.



The vision of the project arises from a series of participatory design workshops and subsequent validation of the proposals. These workshops were key to promoting a sense of ownership in the community when viewing and making decisions. It was the opportunity to understand and 'co-create' areas coherent with the environment and focusing on the needs of the user



As a prospective process, we investigated with the community about their qualitative perception of an 'ideal' space and the relationship with functional determinants. This information is drawn, diagrammed, interpreted and synthesized with the support of community leaders and translators of the local dialect to establish guidelines for the project and programmatic bases.



The opportunities and design findings were multiple; from the qualities that define a comfortable, permeable space, ventilated, in direct contact with the environment and incorporating green areas and gardens. Moreover the materiality was also decisive and was discussed widely in the appreciation of a light and open 'shelter'; adding steep slopes arising from the tissues of *suita*, high spaces and local elucidations of the functional.



During these management processes, the service function of Entre Nos Atelier was to coordinate among the different interests, and to serve as partners of architectural ideas interpreted from the users. The technical coordination with the construction company (Xylo group) was also relevant, and their extensive experience with the selected material (wood) to optimize and explore beneficial technical-constructive criteria for the project.





---

Finally, during the last phase of community ownership is where perhaps the most vivid and spontaneous surprises will arise, product of everyday use and appreciation of a formal-functional expression.

---